

### URINAL FIXTURE - 7190 & 7195

Item: \_\_\_\_\_



Unit may be pictured with some optional features.

- ☐ **7190** Back supply connection 3/4" (19mm) MIPT.
- ☐ **7195** Top supply connection 3/4" (19mm) MIPT.

#### STANDARD FEATURES

- Chase mounted fixture, Floor outlet waste, Washdown Urinal
- Chrome plated strainer with 2" (51mm) caulk outlet.
- **Hardware-**
  - Plated steel concealed anchor rods and fasteners.

#### ► DESCRIPTION

This Urinal Fixture is designed for areas with an accessible pipe chase. The fixtures are fabricated using heavy gauge type 304 stainless steel, welded to form a vandal resistant unit. Flushing provides a sanitary washdown of the interior. Exposed surfaces have a satin finish. Fixtures come with a beehive type strainer with 2" (51mm) caulk type outlet. P-trap is not included.

#### ► PERFORMANCE STANDARDS

This fixture meets or exceeds ASME A112.19.3 / CSA B45.4 standards for "Stainless Steel Plumbing Fixtures".

Listed by



#### ► INSTALLATION

An accessible pipe chase is required for installation. Wall openings for anchor rods and supply piping must be provided by the installer using rough-in drawings provided by Metcraft. Urinal receptor is floor recessed. Two anchor rods screw into sockets on back of the unit to secure the fixture to the wall using washer lugs and hex nuts on the chase side.

Water Consumption:

With HEU consumption flush valve - .5 gpf (1.9 liters)

#### RECOMMENDED FLUSH VALVES

	SLOAN	ZURN	DELANY
Concealed	613	Z6613	F576
Exposed	186	Z6614	F575

## WALL THICKNESS AND TYPE (Must Specify)

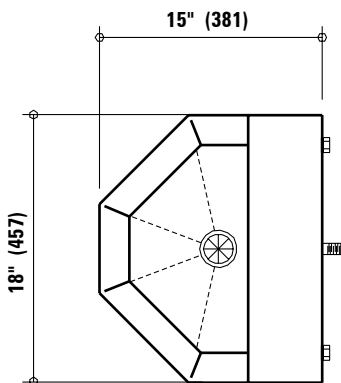
Thickness: \_\_\_\_\_ Type: ☐ Concrete ☐ Block ☐ Steel

## OPTIONS/ACCESSORIES

- ☐ **A120** Security Frame (Wall Sleeve/Can).
- ☐ **A168** Metal Template for Wall Openings.
- ☐ **PCC** Powder Coat - Anti-microbial White.
- ☐ **A245** Flush valve thru wall connector  $\frac{3}{4}$ " MIPT.
- ☐ **A610** Flush Valve Access Panel. Not available on 7195.
- ☐ **A615** Flush Valve Cover. Not available on 7190.

## URINAL FIXTURE - 7190 & 7195

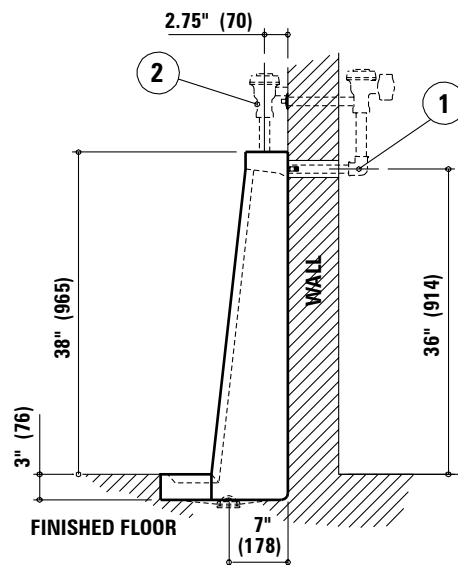
Item: \_\_\_\_\_



Notes:

- 1 - Back Supply (7190)
- 2 - Top Supply (7195)

Due to continuous product improvement Metcraft reserves the right to make changes in design and specifications without prior notice. All dimensions should be verified with the factory for current information.



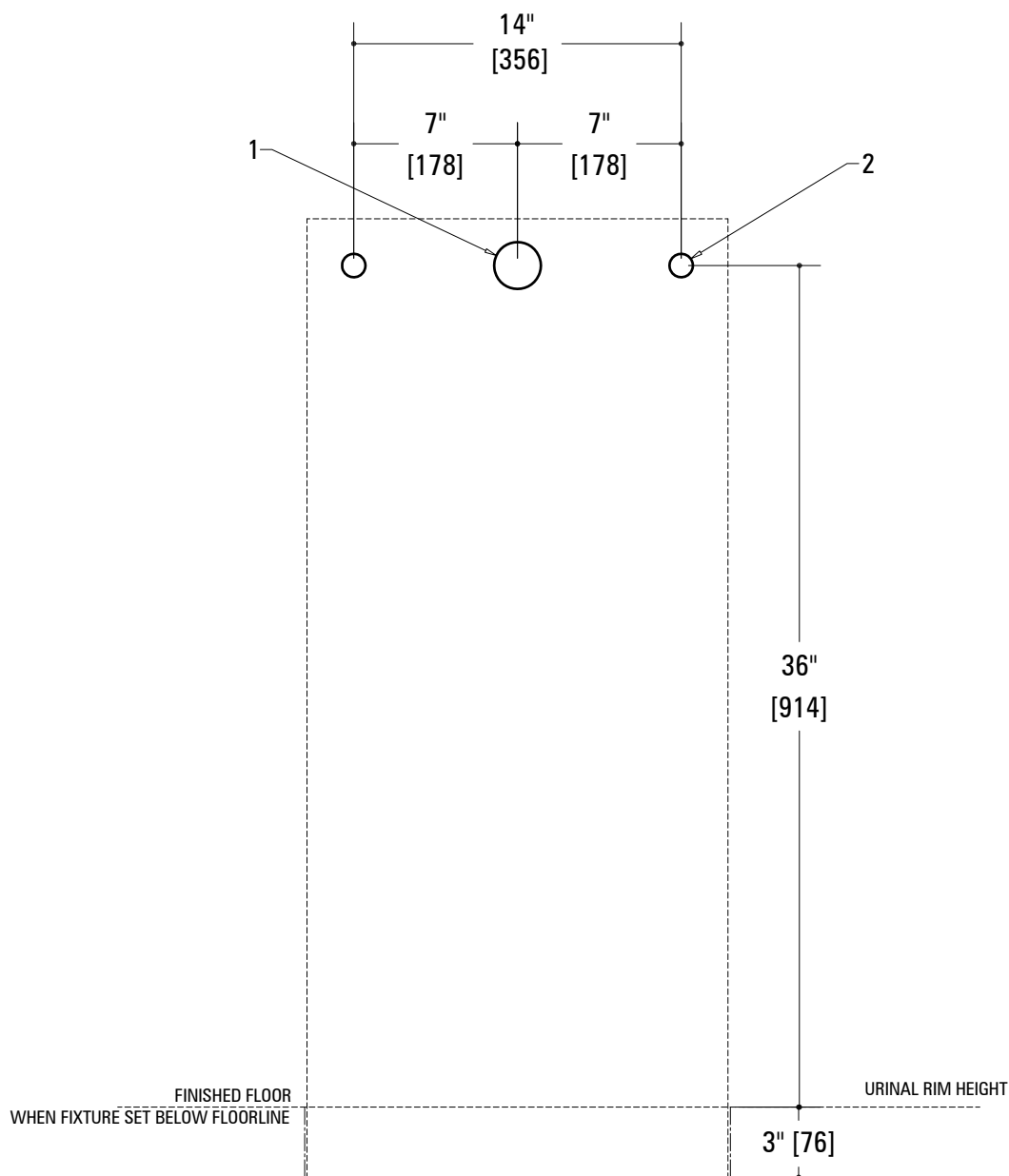
**APPROVED FOR  
MANUFACTURING**

Company: \_\_\_\_\_ Name: \_\_\_\_\_  
Signature: \_\_\_\_\_ Date: \_\_\_\_\_

ITEM:

URINAL FIXTURE - 7190 &amp; 7195

1. 2" (51) Dia. wall opening for 3/4" (19) MIPT flush supply inlet.  
(Not needed for top supply unit 7195)
3. 1" (25) Dia. Wall openings for anchors. (2)

**HOLES FOR CORE DRILLING OR STEEL PLATE WALLS**