

**URINAL FIXTURE - 7140-7144 & 7150-7154**

Item: \_\_\_\_\_



Unit may be pictured with some optional features.

- ☐ **7140** 36" Fixture with Back supply connection 3/4" (19mm) MIPT.
- ☐ **7141** 48" Fixture with Back supply connection 3/4" (19mm) MIPT.
- ☐ **7142** 60" Fixture with Back supply connection 3/4" (19mm) MIPT.
- ☐ **7143** 72" Fixture with Back supply connection 1 1/2" (38mm) MIPT.
- ☐ **7144** 96" Fixture with Back supply connection 1 1/2" (38mm) MIPT.
- ☐ **7150** 36" Fixture with Top supply connection 3/4" (19mm) MIPT.
- ☐ **7151** 48" Fixture with Top supply connection 3/4" (19mm) MIPT.
- ☐ **7152** 60" Fixture with Top supply connection 3/4" (19mm) MIPT.
- ☐ **7153** 72" Fixture with Top supply connection 1 1/2" (38mm) MIPT.
- ☐ **7154** 96" Fixture with Top supply connection 1 1/2" (38mm) MIPT.

**STANDARD FEATURES**

- **Chase mounted fixture, Wall outlet waste, Washdown urinal**
- High volume beehive style strainer.
- 1 1/2" (38mm) OD P-trap for slip-joint connection.
- Vandal resistant stainless steel trap enclosure.
- **Hardware-**
  - Plated steel concealed anchor rods and fasteners.



**WARNING:** Cancer and Reproductive Harm  
- [www.P65Warnings.ca.gov](http://www.P65Warnings.ca.gov).

**► DESCRIPTION**

This Urinal Fixture is designed for areas with an accessible pipe chase. The fixtures are fabricated using heavy gauge type 304 stainless steel, welded to form a vandal resistant unit. Flushing provides a sanitary washdown of the interior. Exposed surfaces are polished to a satin finish. Fixtures come with a beehive type strainer, P-trap and vandal resistant stainless steel trap enclosure.

**► INSTALLATION**

An accessible pipe chase is required for installation. Anchor rods screw into sockets on back of the fixture. Anchor rods pass through the wall and are secured with washers and hex nuts on the chase side of the wall. The installer must provide wall openings for anchor rods and piping per rough-in drawings provided by Metcraft.

**NOTE:** A security frame (wall sleeve) is recommended when installed on a new block (CMU) or poured concrete wall. A security frame is not appropriate for hollow wall construction.

Water Consumption:  
See Chart

**RECOMMENDED FLUSH VALVES**

Concealed	SLOAN	ZURN	DELANY	VOLUME
7140, 7141, 7142	613	Z6613	F576	1.5 gpf
7143, 7144	609	Z6609	F547	3.5 gpf
Exposed				
7150, 7151, 7152	186	Z6614	F575	1.5 gpf
7153, 7154	180-T	Z6610	F448	3.5 gpf

## WALL THICKNESS AND TYPE (Must Specify)

Thickness: \_\_\_\_\_ Type: ☐ Concrete ☐ Block ☐ Steel

## OPTIONS/ACCESSORIES

- ☐ **A168** Metal Template for Wall Openings.
- ☐ **A245** Flush valve thru wall connector  $\frac{3}{4}$ " MIPT. Not available on 7143, 7144, 7153 and 7154.
- ☐ **A246** Flush valve thru wall connector  $1\frac{1}{2}$ " MIPT. Not available on 7140, 7141, 7142, 7150, 7151 and 7152.
- ☐ **A610** Flush Valve Access Panel. Not available on 7150-7154.
- ☐ **A615** Flush Valve Cover. Not available on 7140-7144.

## URINAL FIXTURE - 7140-7144 & 7150-7154

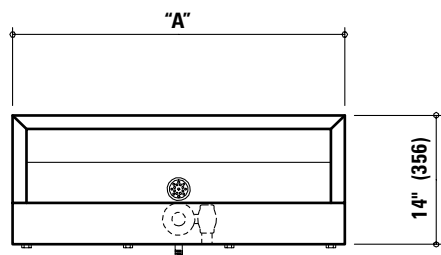
Item: \_\_\_\_\_

	7140 & 7150	7141 & 7151	7142 & 7152	7143 & 7153	7143 & 7153
A Dimension	36"	48"	60"	72"	96"

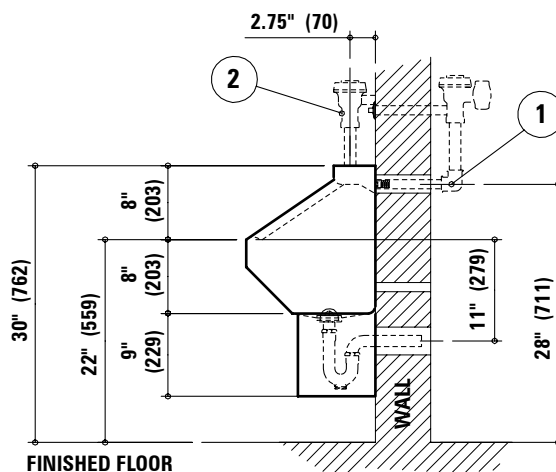
Notes:

1 - Back Supply (7140-7144)

2 - Top Supply (7150-7155)



Due to continuous product improvement Metcraft reserves the right to make changes in design and specifications without prior notice. All dimensions should be verified with the factory for current information.



**APPROVED FOR  
MANUFACTURING**

Company: \_\_\_\_\_ Name: \_\_\_\_\_  
Signature: \_\_\_\_\_ Date: \_\_\_\_\_