

5022 - 5023

Operating mechanism

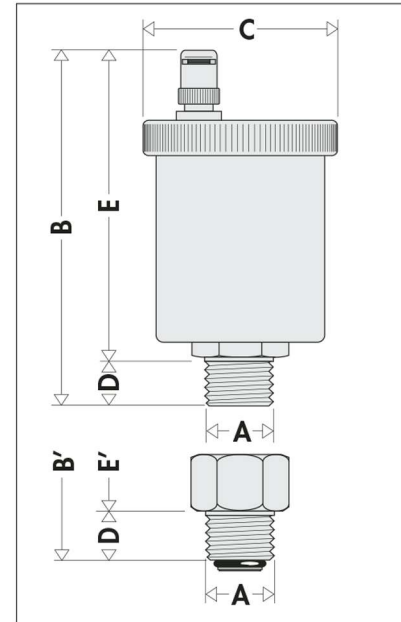
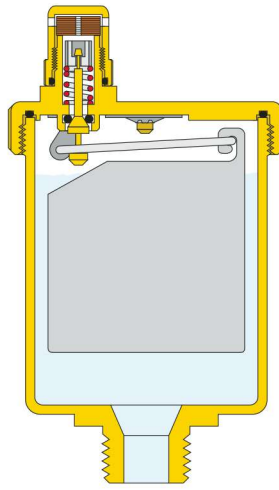
The air is vented by means of a stem mechanism protected against debris from outside.

Chamber

The height of the chamber for float movement is designed to collect high air volumes from water.

Hygroscopic cap

A safety hygroscopic cap automatically closes the air discharge in case of contact with water.



Code	A	B	C	D	E
502243A	1/2"	4"	2 3/16"	1/2"	2 1/2"

Code	A	B'	C	D	E'
502343A	1/2"	4 3/4"	2 3/16"	1/2"	3 1/4"

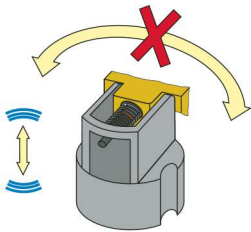
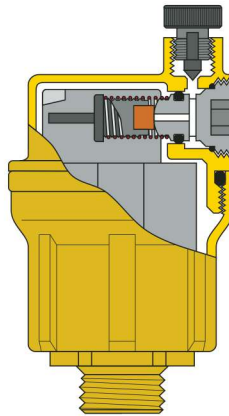
5026 - 5027

Operating mechanism

The function of this device is guaranteed by an operating mechanism made of silicon rubber specially designed to vent when pressure reaches high values in the system.

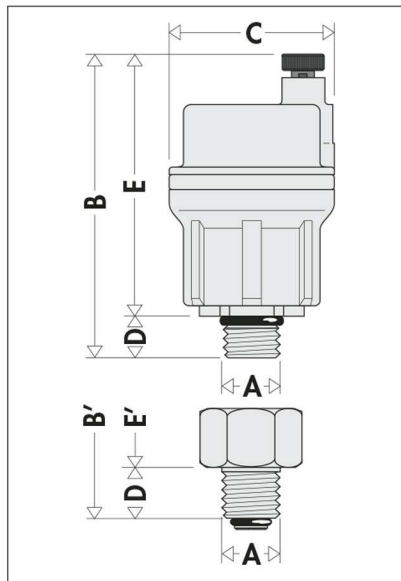
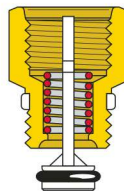
Antivibration and antirotation system on the float

This system guarantees that in the rest position the air relief valve will not be affected by any movement of the float.



Check valve

The check valve on 5023 and 5027 series allows an easy maintenance or substitution of the valve without purging the system.



Code	A	B	C	D	E
502610A	1/8"	3 1/16"	1 9/16"	7/16"	2 5/8"
502620A	1/4"	3 1/16"	1 9/16"	1/2"	2 5/8"

Code	A	B'	C	D	E'
502710A	1/8"	4"	1 9/16"	1/2"	3 3/8"
502720A	1/4"	4"	1 9/16"	1/2"	3 3/8"

Air flow

