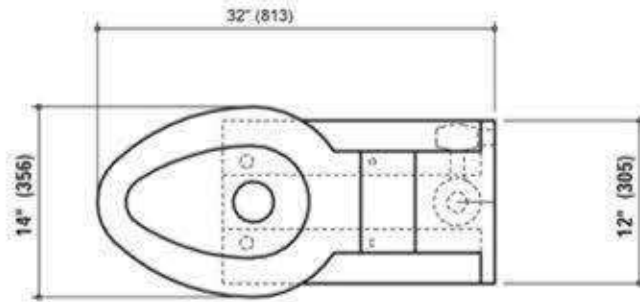




WITH HS OPTION

PlumbingSupply.com
Order Verification Form
Signature Required Below

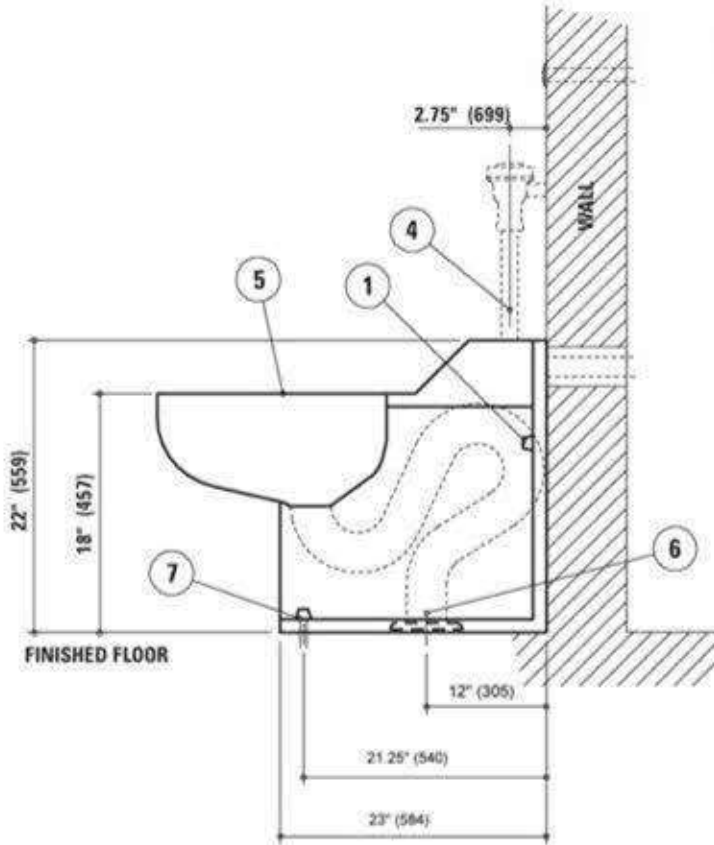
FIXTURE PLAN VIEW



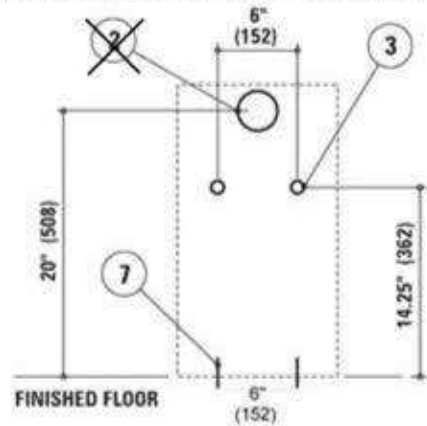
HS - OPTION

5.5" Center to Center
toilet seat bolt holes

FIXTURE SIDE VIEW



WALL ELEVATION VIEW (fixture side)



ROUGH-IN INFORMATION

- ① Tamper resistant cap nuts (4)
- ③ Anchor locations (2)
- ⑤ Mirror finish seat
- ② 3" (76mm) wall opening for 1 1/2" (38mm) FIPT flush supply inlet (model #4653)
- ④ 1 1/2" (38mm) MIPT top supply inlet (model #4658)
- ⑥ Floor outlet gasket flange
- ⑦ Floor anchors (2)

Dear Customer,

Verification must be received before order can be entered for shipment.

Please sign to verify #4658-HS Top Supply Handicap toilet fixture meets your requirements.

Customer Signature

Please print name and return to:

PlumbingSupply Group LLC - FAX: 530-891-0654

EMAIL: sales@plumbingsupply.com